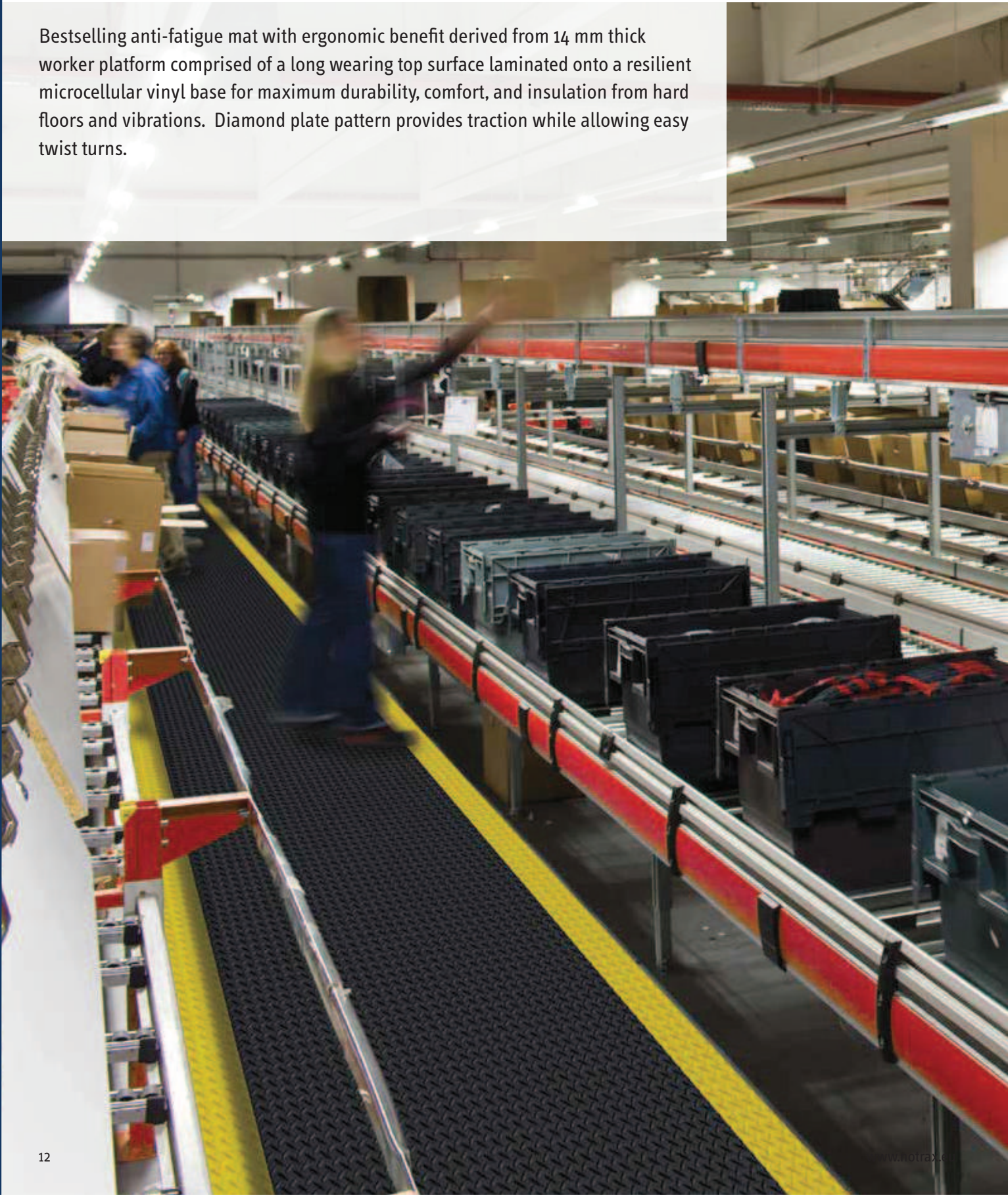


Dry Areas - Heavy Duty Industrial

# 479 Cushion Trax®

Bestselling anti-fatigue mat with ergonomic benefit derived from 14 mm thick worker platform comprised of a long wearing top surface laminated onto a resilient microcellular vinyl base for maximum durability, comfort, and insulation from hard floors and vibrations. Diamond plate pattern provides traction while allowing easy twist turns.





# 479 Cushion Trax®

The design and material composition make this the most versatile matting solution for fatigue relief in both static and dynamic working positions. Slip resistance R10 according to DIN51130 and BG-rule BGR181. Tested and certified by the National Floor Safety Institute (NSFI). Featured with RedStop™ slip resistant backing to prevent mats from shifting. Available yellow borders along sides comply with OSHA code 1910-144. Bevelled edges on all four sides to minimize risk of tripping. UniFusion™ technology engineered to resist in the harshest work environments.

### Recommended uses:

- Heavy duty - dry industrial environments in manufacturing plants, assembly lines, picking, packing and logistics warehouses, individual workstations. Also suitable for commercial environments including hotels, reception desks, shop counters, department stores, banks, restaurants, etc.

### Specifications:

- 4.7 mm PVC top surface permanently bonded onto a 9,3 mm resilient backing of microcellular vinyl
- Overall thickness: 14 mm
- Weight: 5.5 kg per m<sup>2</sup>
- Fire classification Bfl-S1 tested according to EN 13501-1
- Coefficient of friction NSF1 certified.
- Free of DOP, free of DMF, free of ozone depleting substances, free of silicone and free of heavy metals

### Colours:

- Grey, Black, Black/yellow

### Stock sizes:

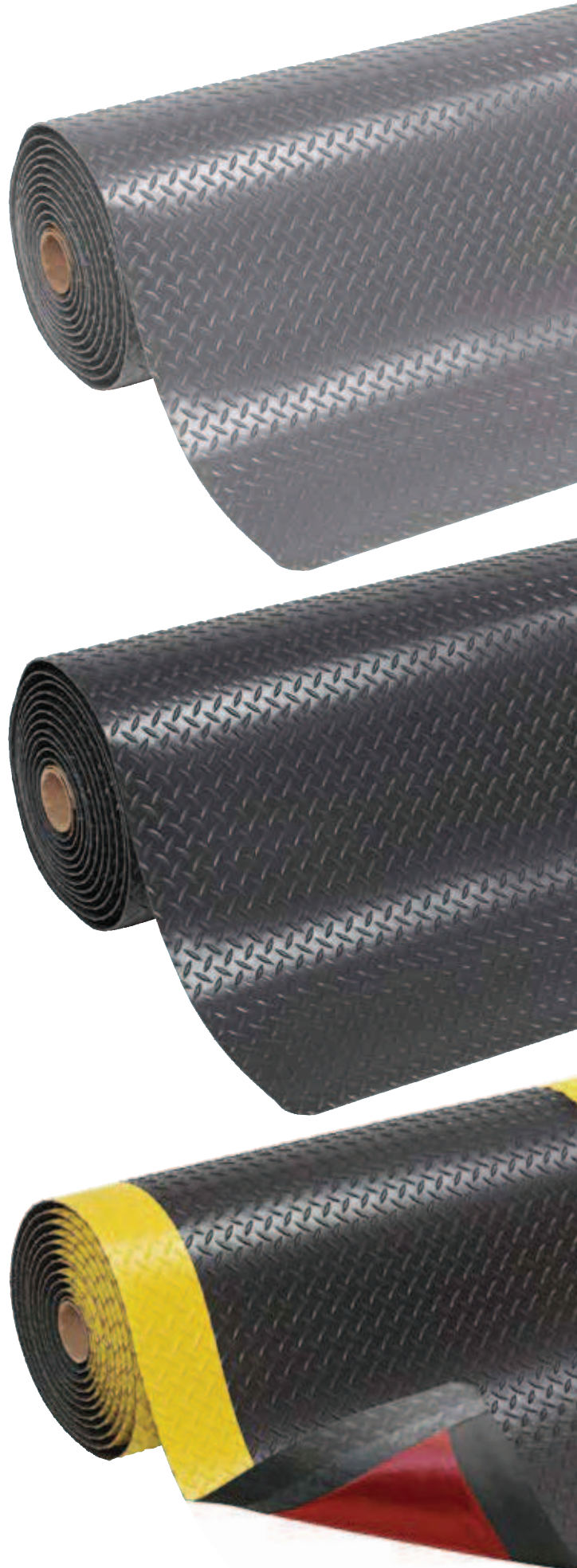
- 60 cm x 91 cm
- 91 cm x 150 cm
- 91 cm x 3 m
- 91 cm x 6 m

### Full rolls 22.8 m:

- 60 cm, 91 cm, 122 cm and 152 cm widths

### Custom lengths:

- 60 cm, 91 cm, 122 cm and 152 cm widths



### PRODUCT TESTING

